

GENERAL NOTES:
 1. VERIFY THE LOCATION OF ALL UNDERGROUND UTILITIES TO BE ASSURE OF CONNECTION POINT OF ELECTRICAL, TELEPHONE, WATER AND SEWER AND MAKE ALL REVISIONS AT CONTRACTOR'S EXPENSE & DANGER.
 2. AT THE END OF THE PROJECT CONTRACTOR MUST VERIFY THAT ALL EQUIPMENTS ON SITE ARE IN GOOD WORKING ORDER SUCH AS: LIGHTPOLES, SIGNS, TELEPHONES, GAS PIPES, ETC...
 3. ALL DIMENSIONS MUST BE TAKEN ON ALL PLANS BY USING A SCALE. IF DIMENSION IS NOT APPEARING, ASK TO THE ULTIMATE CONSTRUCTION COORDINATOR TO CLARIFY THE SITUATION.

IMPORTANT NOTE:
 ALL WORK MUST BE DONE ACCORDING TO DIFFERENT CODES AND REGULATIONS IN FORCE.
NOTE 1:
 REUSE ASPHALT PAVEMENT TO OBTAIN A 15MM DIFFERENCE BETWEEN LOWEST POINT OF SIDEWALK'S SLOPE AND ASPHALT.

STORM AND SANITARY SEWER, WATER MAIN AND WASTE CATCH BASINS AND UTILITIES DRAINAGE PLAN AND SECTIC OVERFLOW TREATMENT SEE ENGINEERING

LANDSCAPE:
 SEE LANDSCAPE ARCHITECT

LAND SURVEYOR NOTES:

TOPOGRAPHICAL PLAN OF
 PART OF BLOCK 353
 REGISTERED PLAN 4M-1228
 CITY OF OTTAWA

Notes & Legend

- Deciduous TREE
- CONFEROUS TREE
- MH HYDRO
- MAINTENANCE HOLE (HYDRO)
- MH
- MAINTENANCE HOLE (UNIDENTIFIED)
- CHB INLET
- CHB
- FIRE HYDRANT
- LS
- LIGHT STANDARD
- UP
- UTILITY POLE
- SIGN
- HH
- HANDHOLE
- TR
- BELL TERMINAL BOX
- TR
- CABLE
- CABLE TERMINAL BOX
- AN
- ANCHOR
- D
- DIAMETER
- CL
- CENTRELINE
- INV
- INVERT

ELEVATIONS NOTES

1. ELEVATIONS SHOWN HEREON ARE REFERRED TO GEODETIC DATUM.
2. IT IS THE RESPONSIBILITY OF THE USER OF THIS INFORMATION TO VERIFY THAT THE JOB BENCHMARK HAS NOT BEEN ALTERED OR DISTURBED AND THAT THE ELEVATION INFORMATION IS CORRECT AND THAT THE POSITION AGRES WITH THE INFORMATION SHOWN ON THIS DRAWING.

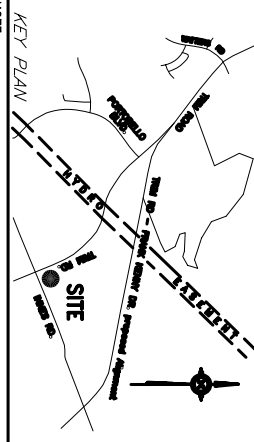
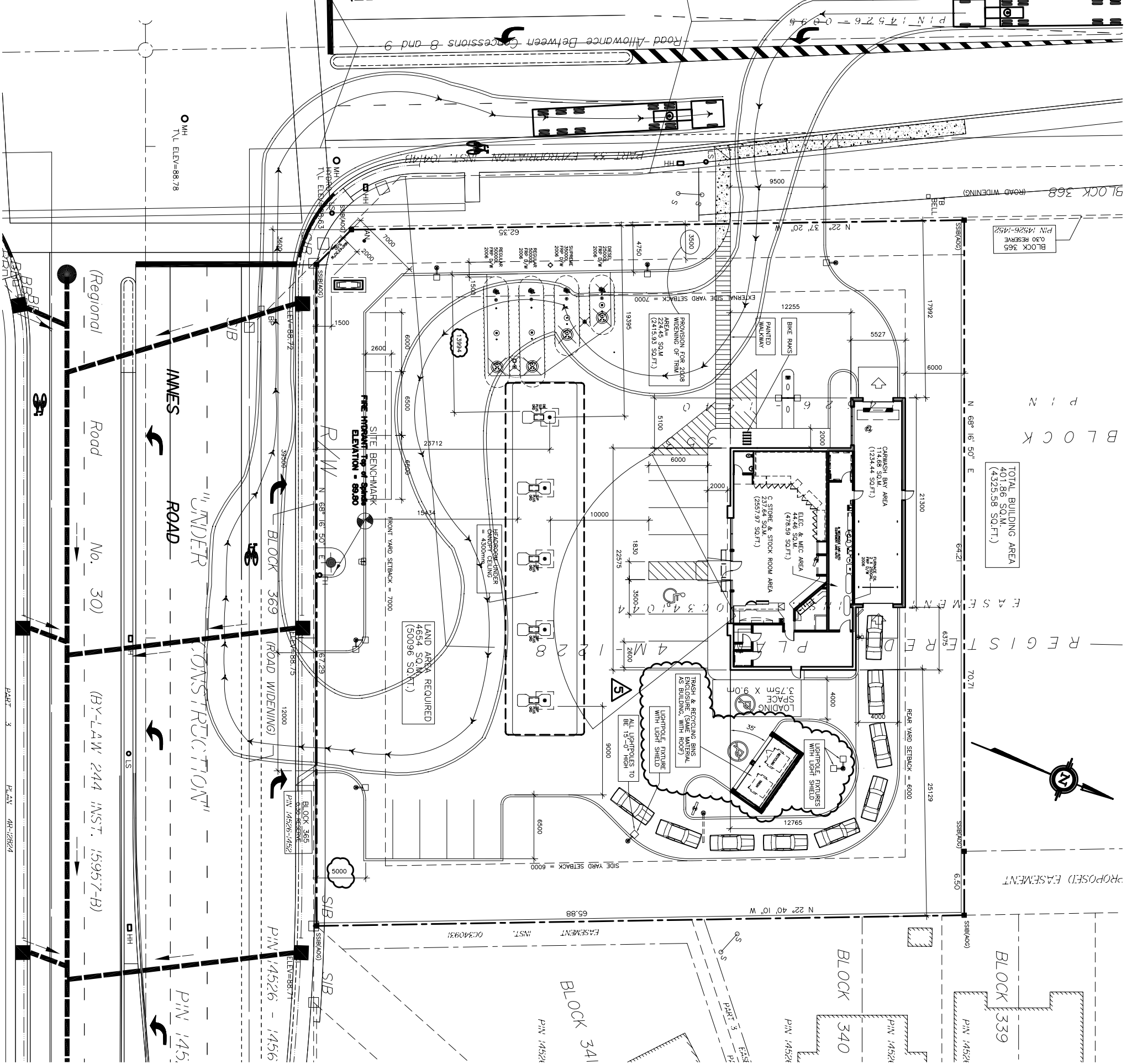
UTILITY NOTES

1. THIS DRAWING CANNOT BE ACCEPTED AS ACKNOWLEDGING ALL OF THE UTILITIES EXISTING AT THE PROPERTY. THE CONTRACTOR SHALL VERIFY THE RESPECTIVE UTILITY AUTHORITIES FOR CONFIRMATION.
2. ONLY VISIBLE SURFACE UTILITIES WERE LOCATED. 3. A FIELD LOCATION OF ALL UTILITIES MUST BE OBTAINED PRIOR TO CONSTRUCTION.

PROJECT ZONING & SITE STATISTICS

Current Zoning:	CA1-X2
Site Area:	4,654 m ²
Total Building Area:	401,86 m ²
Minimum Lot Area:	Required 3,000 m ² Provided 4,654 m ²
Minimum Lot Frontage:	30 m
Minimum Front Yard Setback:	7 m
Minimum Side Yard Setback:	6 m
Minimum Rear Yard Setback:	24.2 m
Minimum External Side Yard Setback:	7 m
Maximum Lot Coverage:	30%
Minimum Pump Island Setback:	9 m
Minimum Car Wash Queue Spaces:	9
Minimum Parking Spaces:	17

DATE: 26 MAR 03 HR: 11:38 PM
 TITLE: TRIM ROAD AND INNES ROAD
 DRAWING TITLE: OPTION 20



NOTE:
 THIS PLAN HAS BEEN DRAWN FROM TOPOGRAPHICAL PLAN OF PART OF BLOCK 353 REGISTERED PLAN 4M-1228 CITY OF OTTAWA. THE PLAN IS SUBJECT TO THE CITY OF OTTAWA'S ZONING BY-LAW 244 (INST. 15957-B) AND THE CITY OF OTTAWA'S ZONING BY-LAW 244 (INST. 15957-B). ALL DIMENSIONS ARE IN METERS.

- LEGEND:**
- EXISTING ELEVATION
 - WATERMAIN
 - SEWER
 - STORM SEWER
 - UNDERGROUND TELEPHONE CABLE
 - UNDERGROUND TELEPHONE CABLE
 - APRAL TELEPHONE CABLE
 - GAS LINE
 - APRAL ELECTRICAL CABLE
 - UNDERGROUND ELECTRICAL CABLE
 - CATCH BASIN
 - MANHOLE
 - CATCH BASIN-MANHOLE
 - WATER VALVE
 - HYDRANT

NO	DATE	REVISIONS	PAR/BR	VER
1	25-04-06	PRELIMINARY	M.L.	A.B.
2	26-05-06	LIGHTPOLES RELOCATION	M.L.	A.B.
3	11-09-06	REVISION FOLLOWING SITE PLAN APPLICATION DEPOSIT	M.L.	A.B.
4	21-09-06	MODIFICATION TO ACCESS ON TRIM ROAD	M.L.	A.B.
5	21-09-06	TRASH AND RECYCLING BIN ENCLOSURE REVISED (BRICK AND ROOF)	M.L.	A.B.
6	04-10-06	ADDITION OF PROJECT ZONING AND SITE STATISTICS	M.L.	A.B.

TRIM ROAD AND INNES ROAD
 OTTAWA, ON.

DATE: 24-04-06
 SCALE: 1:200

BY: M.L.
 CHECKED: A.B.

OPTION 20

P-853